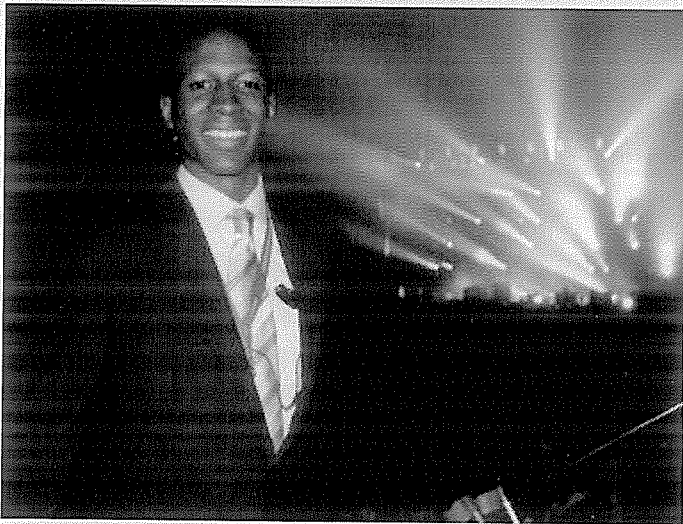




Egress Plan



Showsec

Egress Plan for Jamaica Village – 2012 Finsbury Park

Your primary contact for the document is:

Name: Paul Legge

Mobile: +44 7921700254

Email: paul.legge@showsec.co.uk

Date: 6th Oct 2011 v1

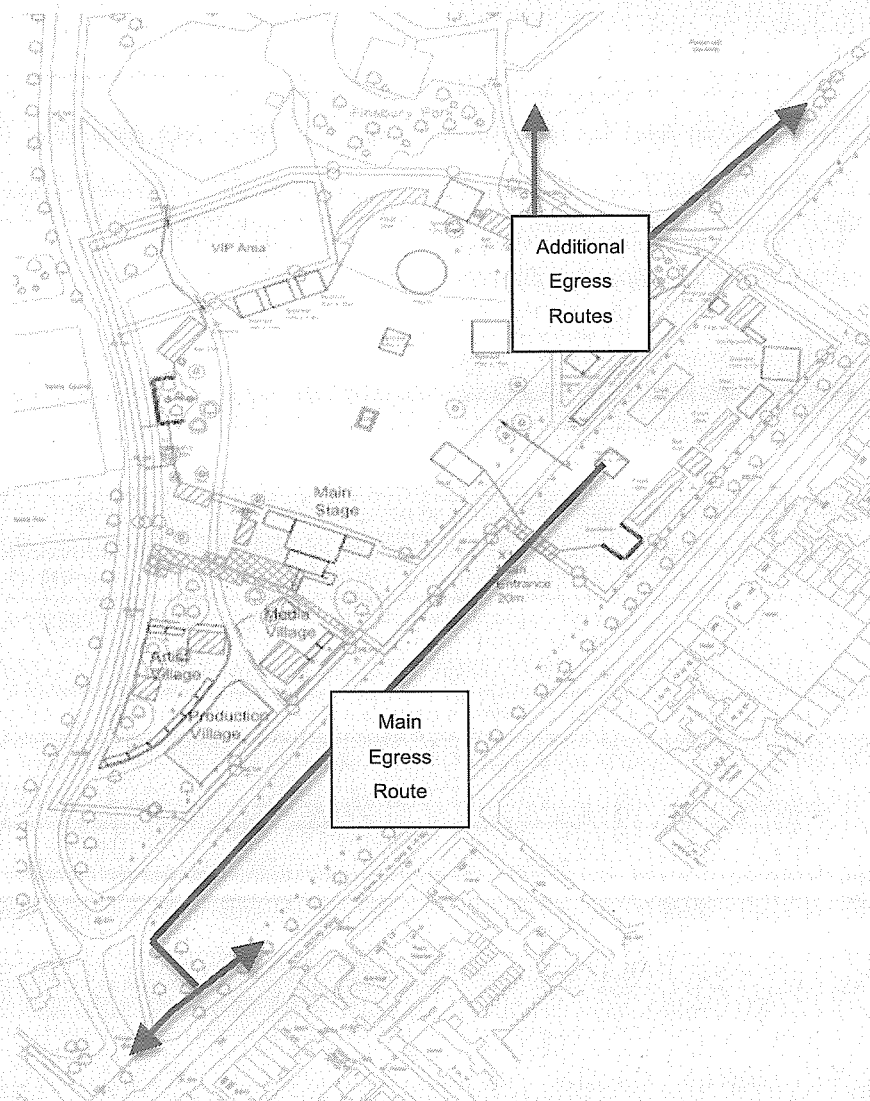
Egress

The exit capacity and egress width has been calculated already and conforms to standard regulations for a site of this size.

The staff will direct customers to use the pre-determined exits. Exits could be used if directed by Event Control in the event of an incident elsewhere on the site.

The primary egress route will be back through the main entrance X1 and leads to Seven Sisters Road which has Finsbury Park station to the South and Manor House station to the north of the road. Additionally X5 and X4 to the north of the site may be opened to ease the pressure on X1 if needed. See Below:

Figure 1



Good lighting and signage are positioned along the egress route to the final exit either to the underground stations, to the car parks or bus stops. Once the site is clearing then a sweep will be carried out by the stewarding and security. After the site is clear the staff should be stood down by the Head of Security and the Event Manager and the night static team will take over. A debrief will take place where any incidents or constructive feedback can be given to the Head of Security. Any incident report cards will be collected at this point. These will be copied and handed in along with the Head of Security Show Report to the Health & Safety Manager

Egress Calculations

The live music for the events will finish each day at 8pm, a small egress is likely to begin from that point meaning the full capacity is unlikely to leave all at the same time.

The main egress route for all public will be through the main entrance X1, which will lead to the Finsbury gate and onto the Seven Sisters road. The calculations on egress are based on the unlikely event of all 15,000 people leaving at the same time, although it is expected that the most of the VIPs and guests (2000) will leave through their exit further reducing the numbers through X1/Finsbury gate.

The egress rate is 90 ppl per minute pass through a 1-meter space. The combined width of Finsbury Gates is 6m, so based on 15,000 people leaving at the same time it will take approximately 20 minutes to egress. $90\text{ppl} \times 6\text{m} \times 28\text{min} = 15,120\text{ppl}$



Staff will be redeployed from the main entrance to Finsbury Gate to manage the flow and direct public through the exit and onto the pathway of Seven Sisters Road; these positions are marked with yellow dots, see **figure 2**. Staff will also be deployed along the pathway barrier line to ensure public do not try to cross the road and are safely directed towards the train/tube and bus stations.

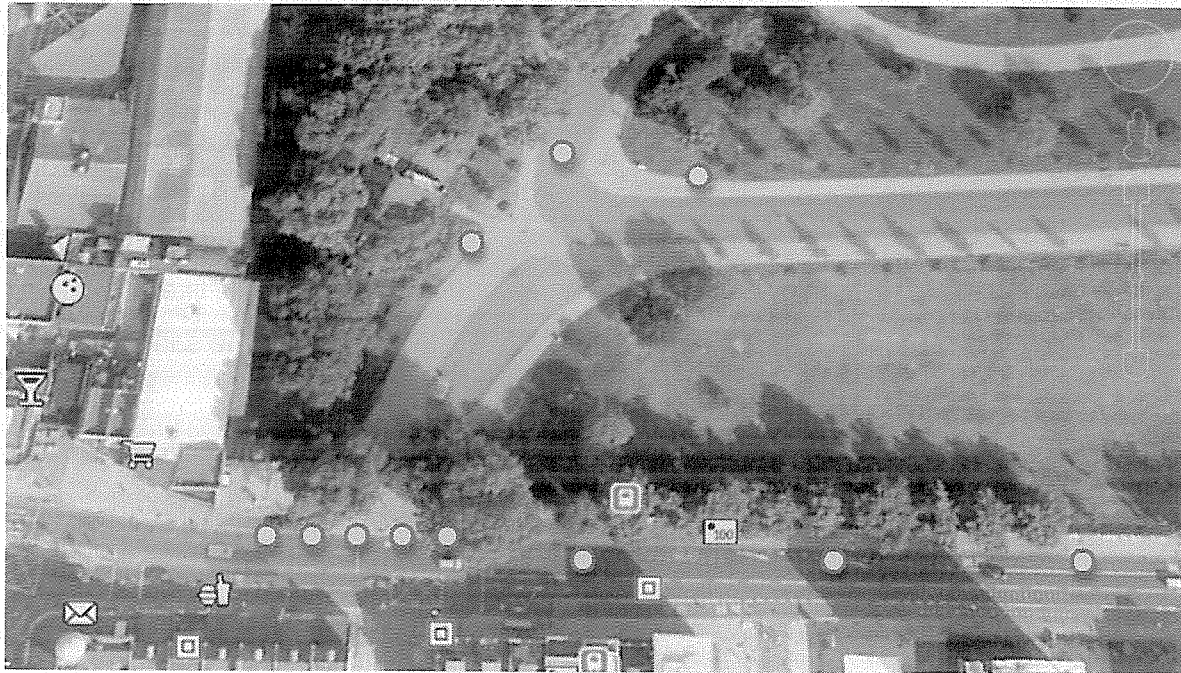
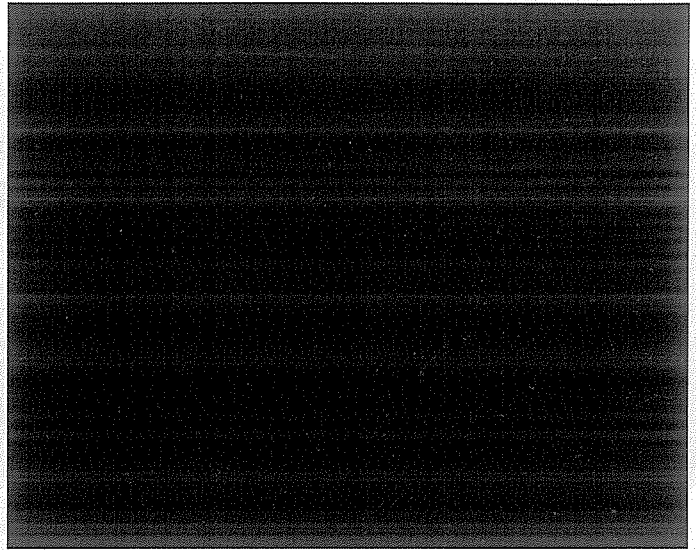
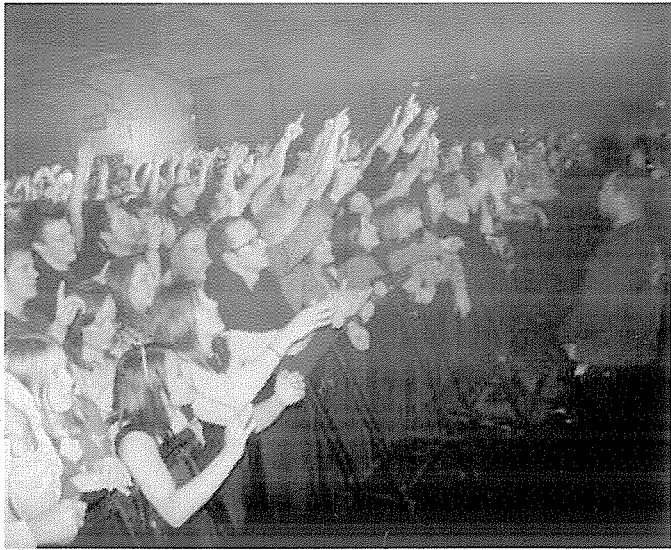


Figure 2

Depending on the remaining capacity and the level of egress, additional exit gates X4 and X5 can be opened to relieve the pressure on the main egress gate (Finsbury Gate). At these extra gates, the public will be directed through the north of the site, leading to Manor House Gate and the 'Manor House Station' end of Seven Sisters Road

This gate is also 6 meters wide so could also handle an egress of 540 people per minute. Additional gates are shown in **figure 2**.



Showsec



Showsec

Regent House | 16 West Walk | Leicester | LE1 7NA

0116 204 3333 | www.Showsec.co.uk

Reg No. 218 7286